

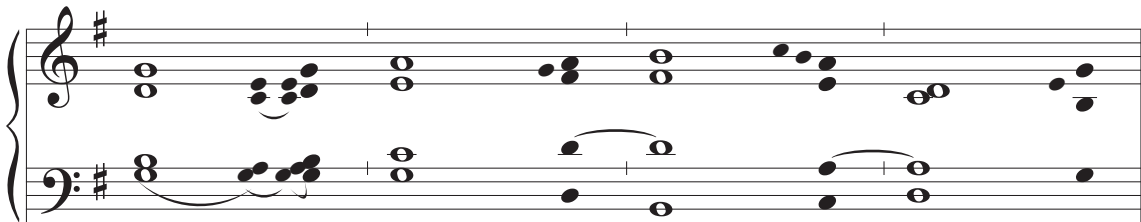
Responsorial Psalm 1

George Black

Introduction. Cantor sings refrain. All repeat refrain. Cantor sings verses. All sing refrain after each group of verses. In the psalm-tone the singer leaves the reciting note on the underlined word or syllable.



Bless - ed are those whose de - light is in the law of the Lord.



- (1) Happy are they who have not walked in the counsel of the wicked,
- (2) nor lingered in the way of sinners, nor sat in the seats of the scornful!
- (3) Their delight is in the law of the Lord,
- (4) and they meditate on his law day and night. *Refrain.*

- (1) They are like trees planted by streams of water,
- (2) bearing fruit in due season,
- (3) with leaves that do not wither;
- (4) everything they do shall prosper. *Refrain.*

- (1) It is not so with the wicked;
- (1) they are like chaff which the wind blows a-way.
- (2) Therefore the wicked shall not stand upright when judgement comes,
- (2) nor the sinner in the council of the righteous.
- (3) For the Lord knows the way of the righteous,
- (4) but the way of the wicked is doomed. *Refrain.*