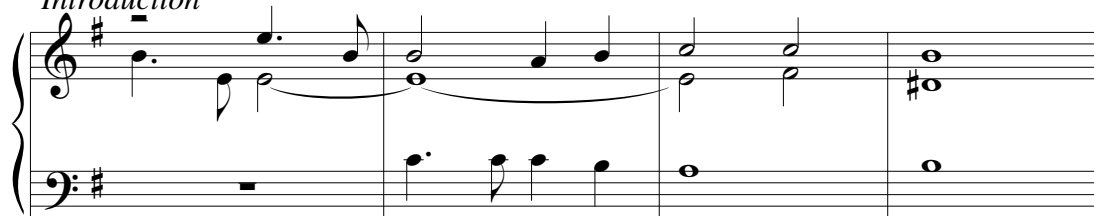


# Psalm 69.7-10,16-18, Proper 12A

George Black

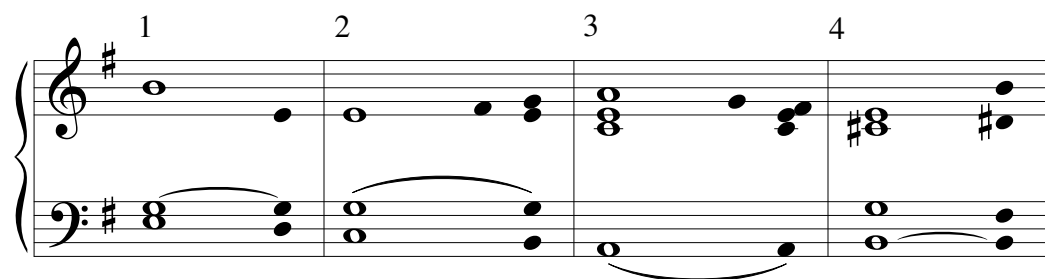
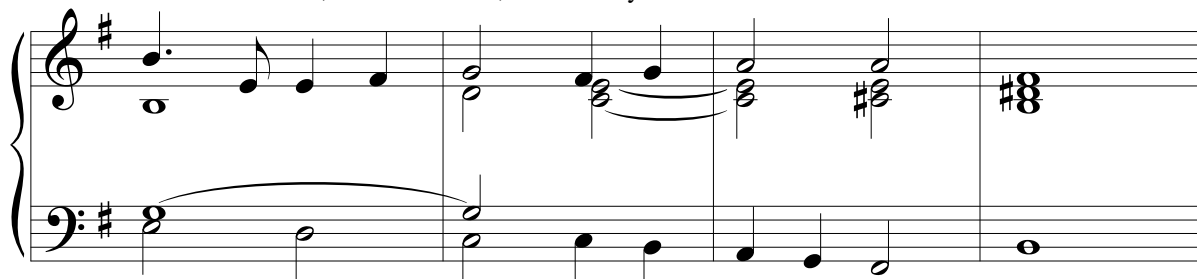
*Introduction. Cantor sings refrain. All repeat refrain. Cantor sings verses. All sing refrain after each group of verses. In the psalm-tone the singer leaves the reciting note on the underlined word or syllable.*

## Introduction



## Unison

An - swer me, O Lord, for your love is kind.



(1) Surely, for your sake have I suffered reproach,

(2) and shame has covered my face.

(3) I have become a stranger to my own kindred,

(4) an alien to my mother's children. **R.**

(1) Zeal for your house has eaten me up;

(2) the scorn of those who scorn you has fallen upon me.

(3) I humbled myself with fasting,

(4) but that was turned to my reproach. **R.**

(1) "Let not the torrent of waters wash over me,

(3) neither let the deep swallow me up;

(4) do not let the Pit shut its mouth upon me. **R.**

(1) Answer me, O Lord, for your love is kind;

(2) in your great compassion turn to me."

(3) "Hide not your face from your servant;

(4) be swift and answer me, for I am in distress." **R.**