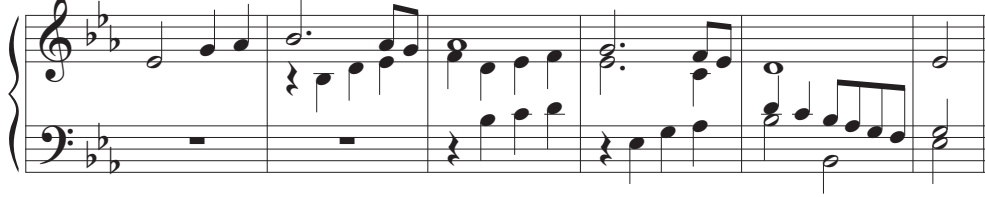


# Psalm 15

George Black

*Introduction. Cantor sings refrain. All repeat refrain. Cantor sings verses. All sing refrain after each group of verses. In the psalm-tone the singer leaves the reciting note on the underlined word or syllable.*

## Introduction



The just shall dwell on your ho - ly moun - tain.

- (1) O God, who may dwell in your tabernacle?
- (2) who may abide upon your holy hill!
- (3) All those who lead a blameless life and do what is right,
- (4) and speak truth from their hearts. **R.**

- (1) There is no guile upon their tongues; they do no evil to their friends;
- (2) they do not heap contempt upon their neighbours.
- (3) In their sight the wicked are rejected, but they honour those who fear God.
- (4) They have sworn to do no wrong they do not take back their words. **R.**

- (1) They do not give their money in hope of gain,
- (2) nor do they take bribes against the innocent.
- (3) Whoever does these things
- (4) shall never be overthrown. **R.**

## Accompaniment for the last refrain