

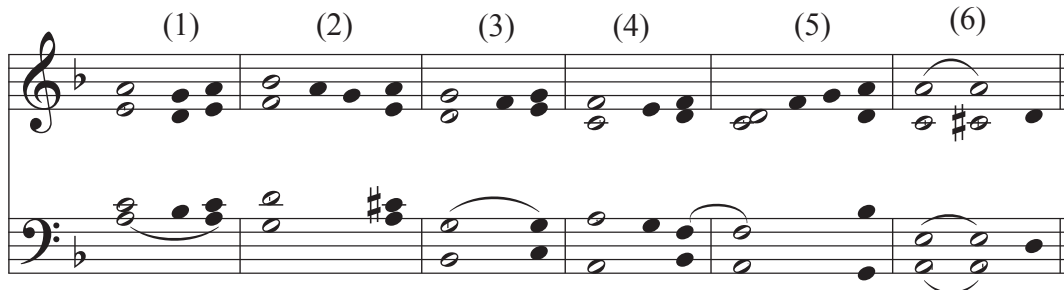
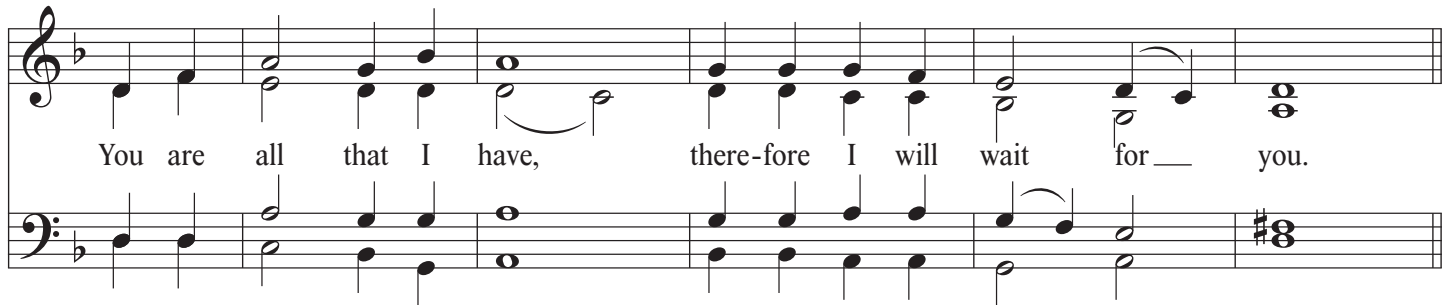
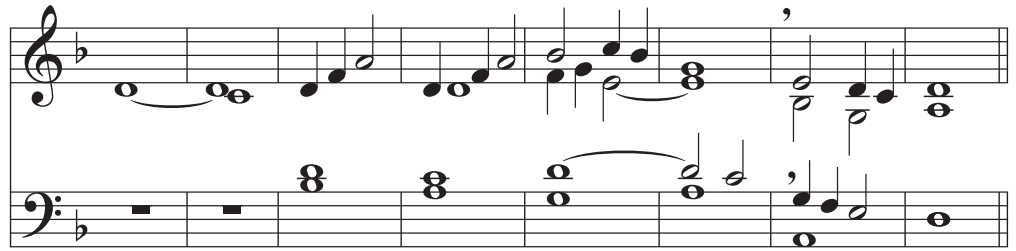
Canticle from Lamentations

Lamentations 3:19-26

George Black

Introduction. Cantor sings refrain. All repeat refrain. Cantor sings verses. All sing refrain after each group of verses. In the psalm-tone the singer leaves the reciting note on the underlined word or syllable

Introduction



In the 6th section of the psalm tone, the change from C to C# occurs on an accented syllable

(1) The thought of my affliction and my homelessness
(3) is wormwood and gall!
(5) My soul continually thinks of it
(6) and is bowed down within me. **R.**

(1) But this I call to mind,
(2) and therefore I have hope:
(3) the steadfast love of the Lord never ceases;
(4) God's mercies never come to an end;
(5) they are new every morning;
(6) your faithfulness, O Lord, is great. **R.**

(1) You are all that I have,
(2) and therefore I will wait for you.
(3) You, O Lord, are good to those who wait for you,
(4) to all those who seek you.
(5) It is good to wait in patience
(6) for the salvation of the Lord. **R.**