

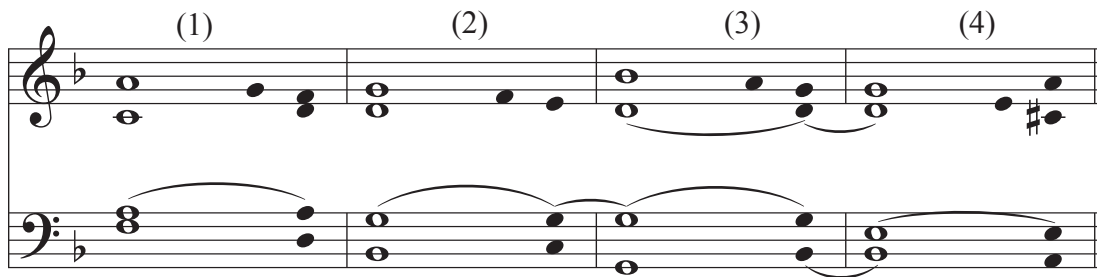
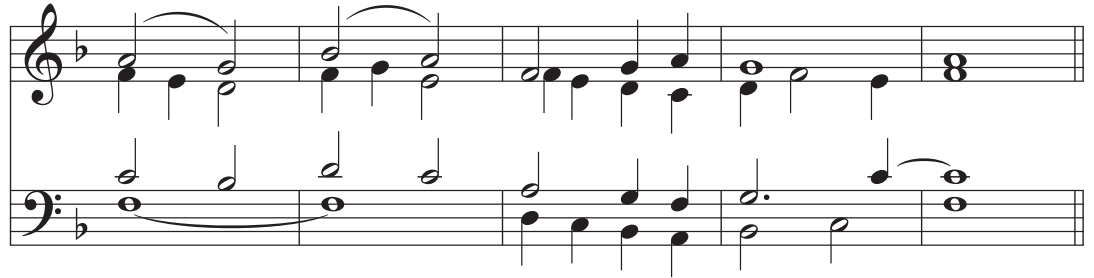
# Canticle from Lamentations

Lamentations 3:19-26

George Black

*Introduction. Cantor sings refrain. All repeat refrain. Cantor sings verses. All sing refrain after each group of verses. In the psalm-tone the singer leaves the reciting note on the underlined word or syllable.*

Introduction



- (1) The thought of my affliction and my homelessness is wormwood and gall!  
(2) My soul continually thinks of it and is bowed down within me.  
(3) But this I call to mind, and therefore I have hope:  
(3) The steadfast love of the Lord never ceases, his mercies never come to an end;  
(4) they are new every morning; great is your faithfulness. **R.**

- (1) "The Lord is my portion," says the Lord,  
(2) "therefore I will hope in him."  
(3) The Lord is good to those who wait for hi, to the soul that seeks him.  
(4) It is good that one should wait quietly for the salvation of the Lord. **R.**

*The last 3 measures of the introduction may be played after the final refrain as a coda.*